



# OptiLINK

## Cost-effective Metro Ethernet Access for Channel Partners

*OptiLINK is CityLink's entry-level Ethernet access service designed to deliver all the advantages of metropolitan fibre at affordable rates. OptiLINK is exclusively available for resale by Channel Partners. The unbeatable benefits of fibre optics linking to your customer's building will give you the optimum Ethernet access to meet your customer's needs.*

OptiLINK is designed as an entry level service to CityLink's suite of metropolitan Ethernet access services. It provides the benefits of symmetric high-performance Ethernet linked to your customer's building by fibre optics. OptiLINK is delivered in the building by CAT5 cable to the customer's premises. As the network needs of any business change, OptiLINK can be very easily migrated to higher speed and more functional CityLink services.

Channel Partners also have available a variety of Head-end port options to meet almost any requirements you may face.

OptiLINK provides the ease and familiarity of standard Ethernet technology while offering the reliability and scalability of CityLink's advanced metro Ethernet network. To find out more call CityLink today.

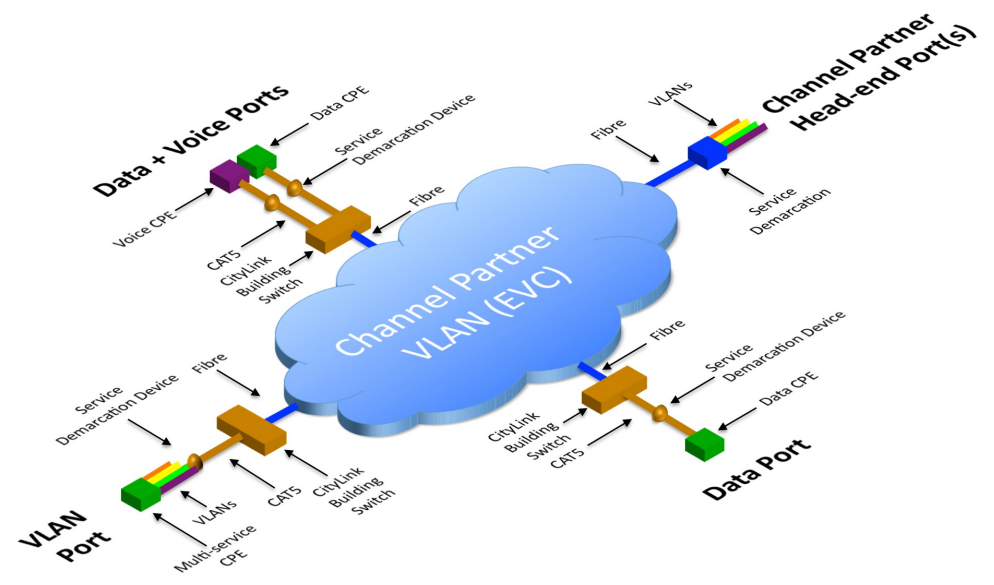
### Benefits for your Customer:

1. Increased productivity resulting from service convergence and advanced service features
2. High quality inter-office networking, voice and Internet services delivered by fibre optics to the building
3. Affordability and familiarity of Ethernet makes it easy to implement OptiLINK
4. Flexibility to meet the changing needs of business without lock-in

OptiLINK enables customers to access their ISP/xSP with the same equipment and solutions they use in their local networks, by using a standard LAN interface.

Three service port options are offered:

- Data port for Internet and applications service delivery.
- Data + Voice port bundle enabling service service convergence onto a single OptiLINK connection while providing port-based QoS.
- VLAN port supporting multi-service delivery and private networking services.



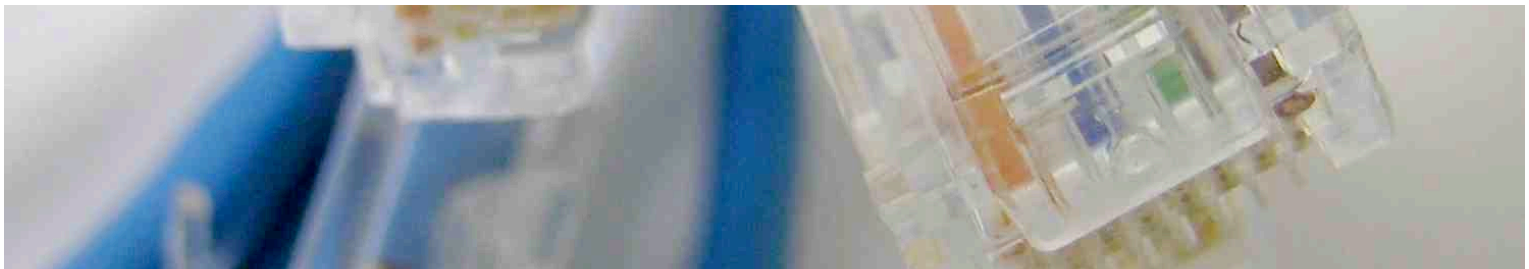
Service Levels	
Target Availability	99.8% <sup>1</sup>
Frame Delay	<5ms
Frame Jitter (at 1Gbps)	<2ms
Frame Loss (at 1Gbps)	<1%
SLA Monitoring	N/A
Proactive Service Maintenance	N/A
Access Protection	N/A
SLA Non-performance Penalties	N/A
Service Support	24 hrs x 7 days
On-site Service Restoration	8 hrs x 5 days
Frame Throughput at Access	shared bandwidth to core switch

UNI Attributes	
Circuit Type	IEEE 802.3 physical interface
Circuit Delivery	Fibre to the building, CAT5 to customer
UNI Interface Speed	100Mbps(Full duplex)
UNI Physical Interface	RJ45 wall mounted
UNI MTU Size	Up to 1522 Bytes
Service Multiplexing	No
All to one bundling	Yes
EVC Type	Multipoint to Multipoint
Ingress bandwidth per EVC	CIR=PIR 5, 25 Mbps

EVC Attributes	Data/Voice Port	VLAN Port
CE-VLAN Preservation (QinQ)	No, but VLAN mapping optional	Yes
CE-VLAN limit	N/A	4095
CE-VLAN QoS preservation	No	Yes
CE-connected device	Layer 3 device (Layer 2 device with VLAN Mapping)	Layer 2+ device
MAC Layer	IEEE 802.3	
MAC address limit	One per port (20 per port with VLAN mapping)	50 per port

Notes:

1. Based on the assumption that 1 major outage occurs annually, service restoration is only carried out during business hours, and that building switches delivering the OptiLINK service are building mains powered only (i.e. no switch UPS).



CityLink Ltd, Level 5, CityLink House, 53 Boulcott Street  
 PO Box 9328, Martin Square, 6011  
 WELLINGTON

Ph: 0800 4 CITYLINK [sales@citylink.co.nz](mailto:sales@citylink.co.nz)  
[www.citylink.co.nz](http://www.citylink.co.nz)

Feb2010\_1